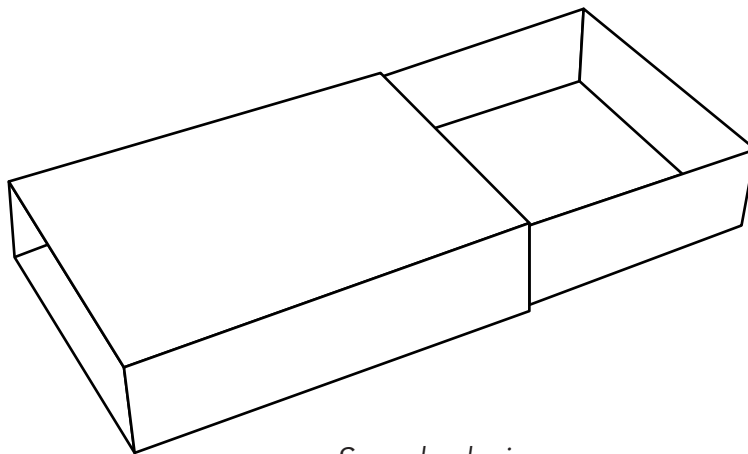


You will need:

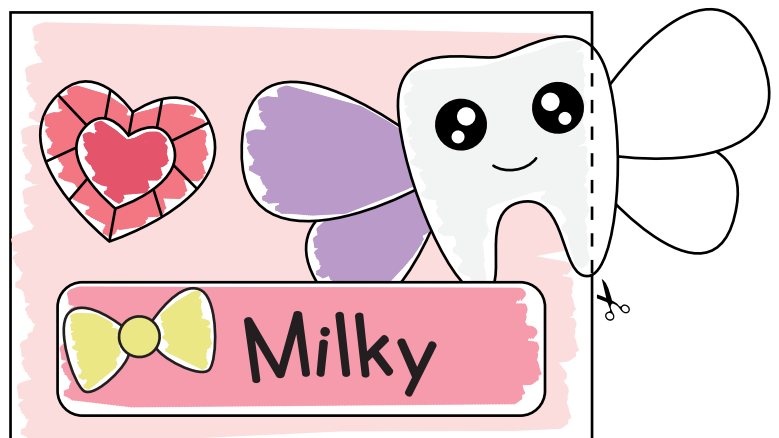
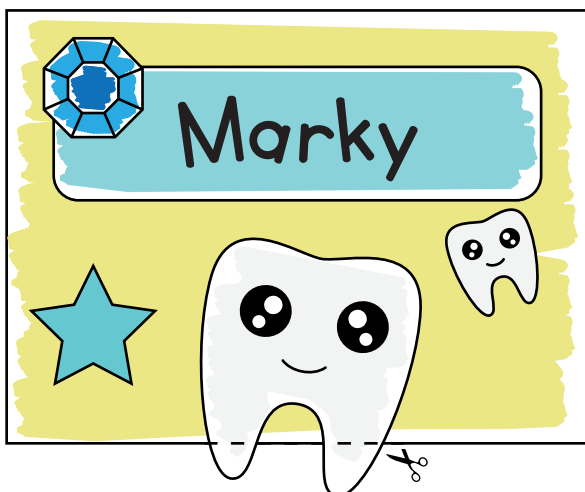
1. Scissor
2. Crayons or color pencils
3. Glue

Follow the steps:

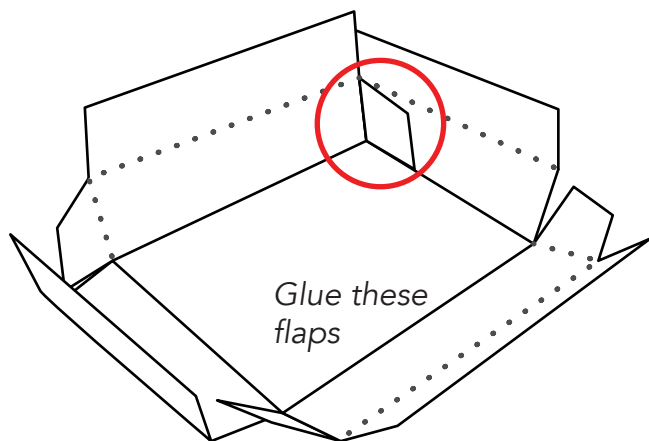
1. Color and cut template.
2. Assemble drawer and case. Instructions are on the next page.
3. Customize your own tooth fairy box!
4. Don't forget your name!



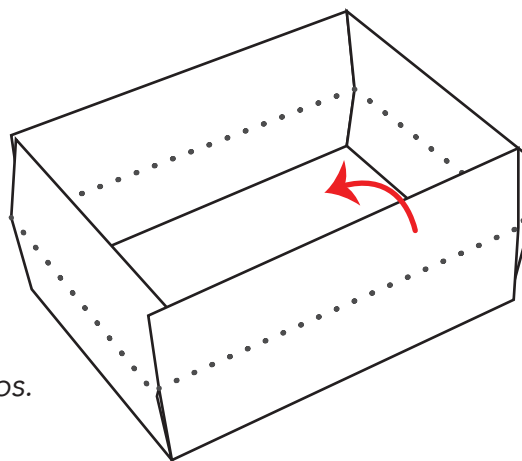
Sample designs



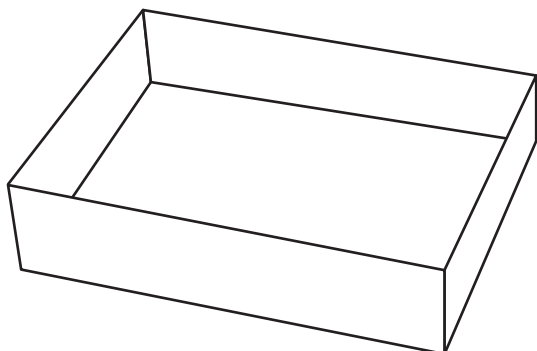
Drawer



Apply glue on each flap of the box drawer template. Fold and stick it to the sides to secure the box drawer.

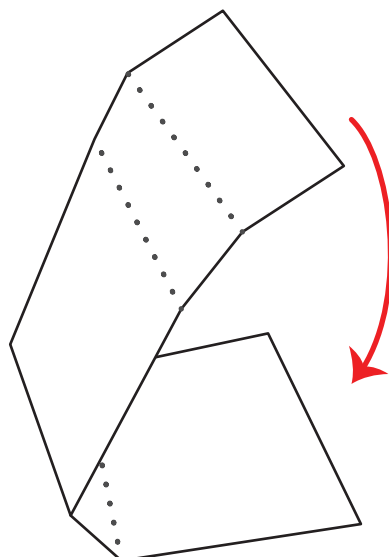


Once you're done sticking all the flaps on each side of the box drawer, fold the upper part of the template inwards to cover the flaps.

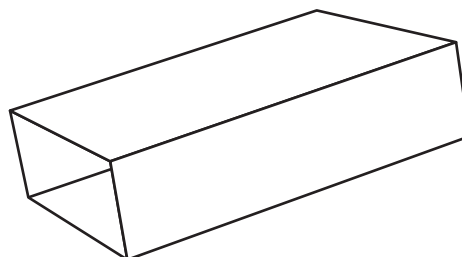


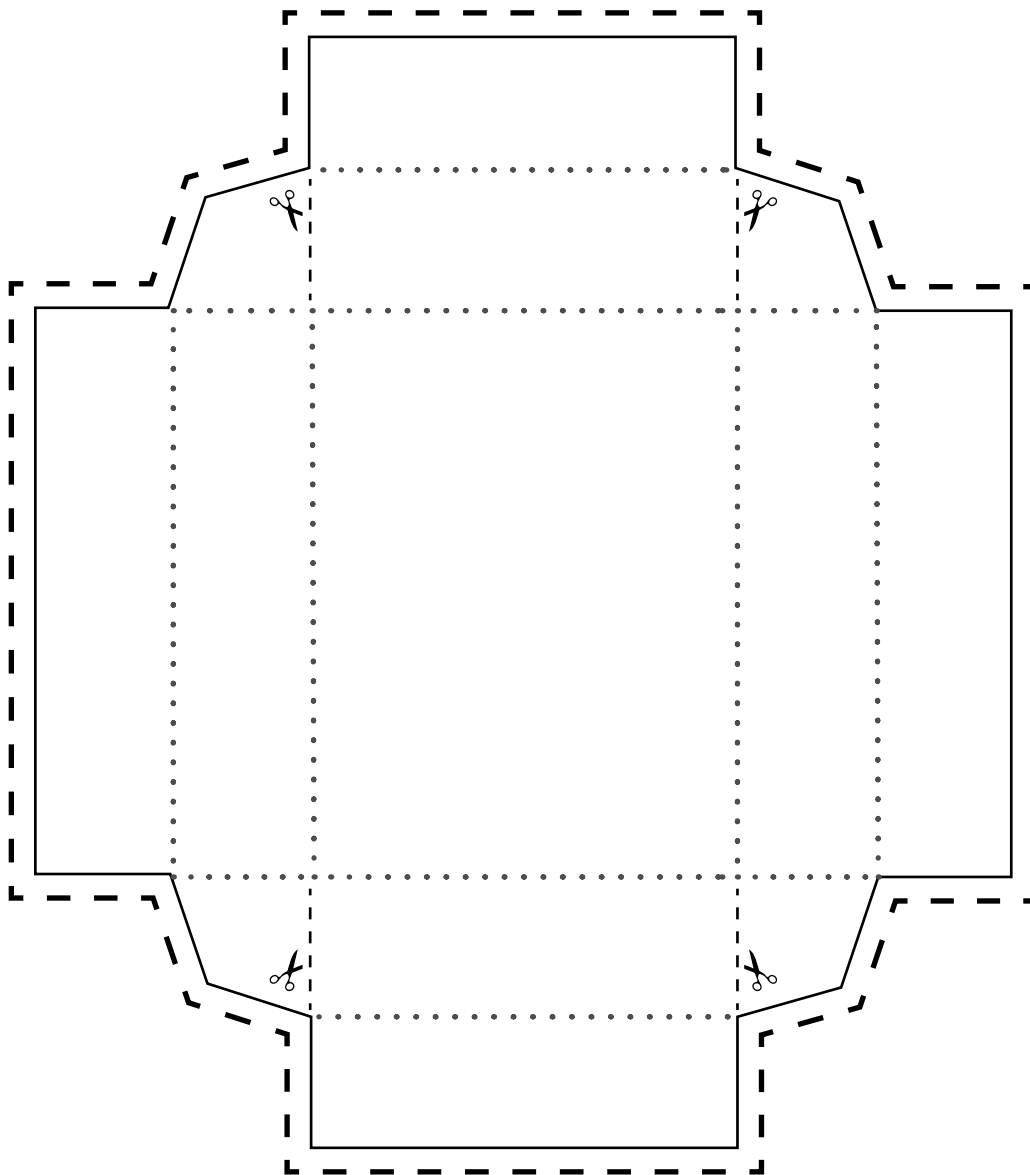
Finished drawer

Case



Glue and stick





Name Box

